

Replace the steamer

Tool:



Scissors



#7 & #24 wrench



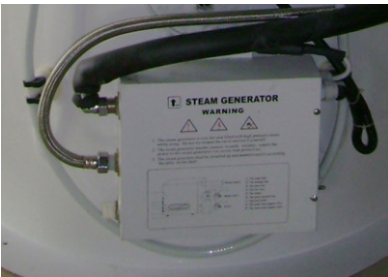
X pincers



“+” shape screwdriver

Step:

1. Refer to picture #1, firstly shut off the power and water supply, then loosen off the water inlet and outlet hose.



#1

2. Refer to picture #2, loosen off the steam insulation hose by #24 wrench.



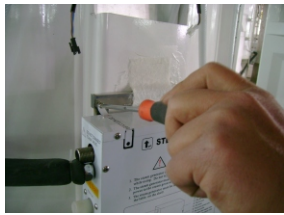
#2

3. Refer to picture #3, loose off the plug in & out between the power box and steamer.

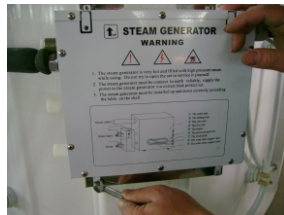


#3

4. Refer to picture #4.1,#4.2, loosen off the fasten screws between steamer frame and stainless steel stander by the “+” sharp screwdriver and #7 wrench.

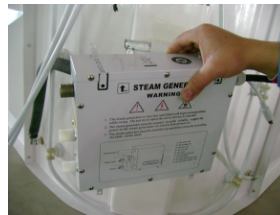


#4. 1



#4. 2

5. Refer to picture #5, after unscrew 4 bolts,cut the steam power cable by scissors, get off the steamer.



#5

6. Refer to picture #6, get the new steamer with matched black cable, Operate step 1-5 fasten the new steamer to stainless steel frame, restore the inlet outlet/insulation hose and plug-in/out.



#6

7. Refer to picture #7.1,7.2, unscrew 4 bolts from crust of power box by “+”screwdriver.



#7. 1



#7. 2

8. Refer to picture #8, by scissors to cut out the glue around rim of side crust, open the power box crust.



#8

9. Refer to picture #9, get to Live, Negative , Earthen wire.



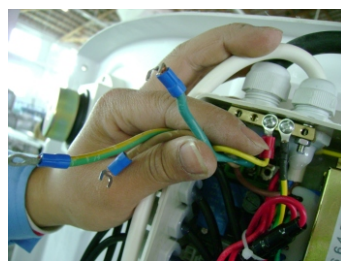
#9

10. Refer to picture #10, by screwdriver to unscrew the bolts on Live, Negative , Earthen wire.



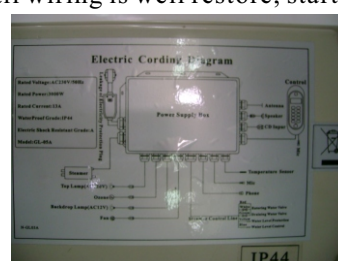
#10

11. Refer to picture #11. from outside and inside to loose hexangular plastic screw, to draw out the cable from the screw .



#11

12. Refer to the picture #12. 1, 12. 2, insert this cable (with L,N,E wires jointed) into Hexangular cable bolts, as per previous wires connection position and wires color to fasten 3 phase wires by screwdriver, restore the power box crust, restore and fasten the cover by previous 4 bolts. After insure all wiring is well restore, start to use.



#12. 1



#12. 2